

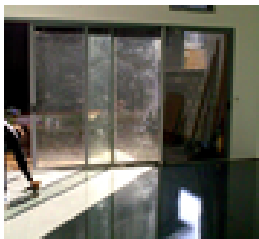
# COLODUR ECO PLUS



Aliphatic water-based polyurethane resin with uv-protection additives

## DESCRIPTION

Colodur Eco Plus is a waterborne high performance aliphatic polyurethane resin. It cures giving hard and flexible floor coatings, abrasion resistant. It provides a surface protection for heavily used floorings. This material does not discolour upon sunlight exposure, making it suitable for outdoor applications. Being almost solventless, it can be used in public areas with no need to close them. Colourless and pigmented versions are available.



## APPLICATION

Suggested uses include:

- Parking decks
- Industrial flooring.
- Tennis courts and recreational areas.
- General concrete flooring
- Sealing and surface protection of epoxy, polyurethane or cementitious self-leveling products.

## CERTIFICATIONS

EN 13813 SR-B4,0-AR0,5-IR14,7

Applus Laboratory: Taber Abrasion test.

N. 08/32309984.

Slip class: No. 10/1709-1861- 10101589-1262



## TECHNICAL DATA

### INFORMATION ON THE PRODUCT BEFORE APPLICATION

	Component A	Component B
<b>Chemical description</b>	Water-based polyol dispersion	Solventless aliphatic polyisocyanate
<b>Physical state</b>	Liquid	Liquid
<b>Packaging</b> (A+B pre-dosed kit)	Plastic container	Metal container
	Colourless: 11.4 kg 3 kg	Colourless: 3.6 kg 1 kg
	Pigmented 12.5 kg 3.3 kg	Pigmented 2.5 kg 0.7 kg
<b>Non-volatile content (%)</b>	Colourless: 33 Pigmented: 60	100%
<b>Flash point</b>	>200 °C	>100°C
<b>Colour</b>	Colourless: milky white. Pigmented: variable. Information on available colours under request.	Colourless

### Density

Temp (°C)	Density (g/cm3)	Temp (°C)	Density (g/cm3)
25	1.03 (clear) 1.31 (pig)	25	1,15

### Viscosity

Approximate

Temp (°C)	Viscosity (m.Pas)	Temp(°C)	Viscosity (m.Pas)
35	90	35	300
25	125	25	450
15	350	15	1200
5	900	5	2200

### Pigmented

Temp (°C)	Viscosity (m.Pas)
35	800
25	1200
15	2500
5	5000

<b>VOC</b> (VOC class as per 2004/42 EC)	<10 g/L 1% A, i
<b>Relación A/B</b>	<b>Colourless:</b> A=1, B=1.05 by weight A=1, B=1 by volume <b>Pigmented:</b> A=100, B=20 by weight A=100, B=23 by volume

### Mixture properties

Temp (°C)	Density (g/cm3)	Viscosity (mPa.s)
25	1.10 (clear) 1.19 (pigm).	400 (clear) 2900 (pig)

<b>Colour</b>	Milky white or pigmented
---------------	--------------------------

<b>Overall non-volatile content (% by weight)</b>	Colourless: 49% Pigmented: 67%
---	-----------------------------------

### Pot life

Approximate	Conditions (100g)	Pot Life (min)
	20°C, 40% hr	180
	9°C, 60% hr	300

<b>Storage</b>	Keep between 10° y 30°C. Protect from frost.
----------------	--

<b>Use before</b>	12 months after manufacture date
-------------------	----------------------------------

### INFORMATION ON THE FINAL PRODUCT

<b>Final state</b>	Solid polyurethane film
<b>Colour</b>	Several colours available. Please contact Krypton Chemical for further information
<b>Hardness Shore</b>	55D Clear 63D Pigmented
<b>Mechanical properties</b>	Elongation at break: 35% (Clear), 23% (Pigmented)
<b>Abrasion resistance</b>	15 mg (500 cycles) 28 mg (1000 cycles)
<b>UV resistance</b>	Colour stable under sunlight
<b>Slip resistance</b>	With quartz sand spreaded onto (0,4-0,9 mm) at 1 kg/m3: class 3 as per UNE EN 12633-2003
<b>Gloss</b>	Clear: 75-80% (at 60°) Pigmented: 60-65% (at 60°)
<b>Chemical resistance</b>	Surface contact, 24 hours, 25°C (5=ok, 0=not recommended)

Chemical	Results
Water	5
Isopropyl alcohol	0
Xylene	0
Hydrochloric acid (househol d-type)	5
Bleach	5
Ammonia	1
Sodium hydroxide 50%	5
Diesel	3
Engine oil	5
Concentrated acetic acid	0
Hydrogen peroxide 10%	0
Methoxypropyl acetate	0
Acetone	0
Acetic acid 10%	0
Skydrol	5



KRYPTON CHEMICAL SL

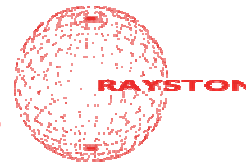
C/ Martí i Franquès, 12 - Pol. Ind. les Tàpies  
43890-l'Hospitalet de l'Infant- Spain  
Tel: +34 977 822 245 - Fax: +34 977 823 977  
www.kryptonchemical.com - rayston@kryptonchemical.com

Latest update:

29/11/2016

Page:

1/2



Aliphatic water-based polyurethane resin with uv-protection additives

## SUPPORT REQUIREMENTS

Support must fulfill the following requirements:

- Cohesive strength: minimum 1,5 Mpa.
- Compression strength: minimum 25 Mpa.

Free from any vapour or water pressure. Support must also be clean, dry and free from poorly-adhesive areas. Moisture content must be less than 4%.

Recommended support temperature: 10°C to 25°C.

If underlying moisture is suspected, use a suitable primer. Please contact Krypton Chemical for further information about primer types.

New concrete slabs must be allowed to dry for three weeks before starting job.

## ENVIRONMENTAL CONDITIONS

- Recommended air temperature: 10°C to 30°C
- Recommended humidity: Less than 80%.

## SUPPORT PREPARATION

Concrete:

Abrade, scarify or treat the surface with a diamond grinding machine or similar, and then applying enough quantity of a Rayston epoxy-type primer. Allow a 12-24 hours drying time of the primer before resuming job.

## MIXING

Open the component a container. Pour component B in it and stir gently for 2 minutes. Transfer the mixture to a bigger container and check there is no unmixed product left.

## APPLICATION

Use a suitable paint roller.

## RECOMMENDED QUANTITIES

Apply up to 250 or 300 g/m<sup>2</sup> by coat. Thicker applications can lead to blistering.

## CURING TIME

Curing time depends strongly on the local conditions. Curing speed will increase with temperature and decrease with humidity. Following data refer to 200 g/m<sup>2</sup> applications.

Conditions	Touch dry (h)
20°C, 50% hr	5
20°C, 15% hr	4
5°C, 50% hr	25
5°C, 50% hr	35
5°C, 80% hr	60
35°C, 40% hr	2
35°C, 10% hr	1

## RECOATING

When two coats are applied, the second one can be applied after 24 or 48 the first one is dry to touch.

## RETURN TO SERVICE

Light pedestrian traffic is allowed after 24 hours.

## TOOL CLEANING

Component A and B can be cleaned with water. Cured product cannot be dissolved, unless special stripping products are used.

## FAQS

QUESTION	ANSWER
¿It can be thinned?	Use water, up to 15% of addition, in the A+B mixture, immediately after mixing. If thinning several cans, be sure to use the same amount in each to prevent colour variations.

## MAINTENANCE

A daily water scrubbing is allowed. Caution: some solvents may seriously damage the surface.

## SAFETY

Component B contains isocyanates. Always follow the instructions provided in the material safety data sheet and take the precautions described there. As a general rule, a suitable ventilation must be ensured and any skin contact avoided. This product is intended to be used only for the uses and in the way here described. Sprayed application methods are not recommended due to health/safety reasons. This product is to be used only by industrial or professional users. It is not suitable for DIY-type uses.

## ENVIRONMENTAL PRECAUTIONS

Empty containers must be handled taking the same precautions as if they were full. Containers must be considered as hazardous waste, to be transferred to an authorized waste manager.

## OTHER INFORMATION

The information contained in this Technical Data Sheet, as well as our advice, both written as verbal or provided through testing, are based on our experience, and they do not constitute any product guarantee for the installer, who must consider them as simple information.

We recommend to study deeply all information provided before proceeding to the use or application of any of our products, and strongly advise to conduct tests "on-site" in order to determine their convenience for a specific project.

Our recommendations do not exempt of the obligation of installers to deeply study the right application method for these systems before use, as well as to conduct as many preliminary tests as possible should any doubt arise.

The application, use and processing of our products are beyond our control, and therefore under the exclusive responsibility of the installer. In consequence, the installer will be the only responsible of any damage derived from the partial or total in-observation of our indications, and in general, of the inappropriate use or application of these materials.

**This Technical Data Sheet supersedes previous versions.**